



Bachelor of Science in Biobehavioral Health



PennState
World Campus

A world of possibilities.
Online.

Table of Contents

Online Bachelor of Science in
Biobehavioral Health3

Biobehavioral Health Curriculum4

Career Opportunities for
Graduates5

Frequently Asked Questions.....6

Begin Your Application Today7



“Students in the biobehavioral health program are trained in the understanding and application of a modern perspective on health that suggests health and disease are influenced by a wide array of factors like biology, psychology, culture, and the environment. The curriculum involves diverse subject matter that will prepare students for careers in a broad selection of fields.

The online degree in biobehavioral health is identical to the degree offered at Penn State’s University Park Campus, but provides students with greater flexibility to allow them to pursue their education while also meeting other responsibilities at work and home. This makes it possible for nearly anyone to experience the benefits of obtaining a degree in biobehavioral health, regardless of location.”

—Marc Dingman
Director and Assistant Teaching Professor
College of Health and Human Development
Biobehavioral Health

Online Bachelor of Science in Biobehavioral Health

As concerns continue to rise about the quality of human health on a global scale, new career opportunities emerge for professionals trained to explore and address the complex factors influencing health. Biobehavioral health (BBH) is an innovative interdisciplinary program that focuses on the science that drives health promotion, disease prevention, and the elimination of health disparities.

Penn State's online Bachelor of Science in Biobehavioral Health gives you the opportunity to study the science behind health through a combined emphasis on human development and human health. You can learn about the connections between biology, behavior, social/cultural influences, and environmental factors as they relate to health, and how health status can impact other areas of an individual's life.

This 120-credit bachelor's degree program in the Department of Biobehavioral Health is one of the degrees offered by the College of Health and Human Development, delivered online through Penn State World Campus. The department has a reputation for taking science in new directions with an engaged, global faculty that ranges from geneticists to community health professionals.

As a student in an online course, you can study whenever and wherever it suits you, as you prepare for more challenging—and possibly higher-paying—positions. Our online learning format gives you the flexibility to continue working at your current job while you earn a high-quality Penn State degree.

To learn more about the Bachelor of Science in Biobehavioral Health, visit: worldcampus.psu.edu/bbh





Biobehavioral Health Curriculum

The BBH curriculum is designed to give you the breadth of knowledge needed to understand health and wellness by fully exploring the science behind health.

While you're pursuing this innovative degree, with classes in biobehavioral health, biology, epidemiology, physiology, nutrition, genetics, and statistics, you will have the opportunity to learn from an interdisciplinary team of world-class scientists who contribute to the unique nature of this program.

Upon successful completion of the course work, you should be able to:

- › describe and understand the fundamental biological, behavioral, social, cultural, and environmental processes that influence health and disease
- › explain how the fundamental processes underlying health and disease can interact to produce individual differences in health and health disparities among groups
- › critically evaluate current empirical research on health and disease, explaining implications and limitations to the lay public
- › understand and apply ethical principles in the conduct of research and professional practice, as well as in the analysis and implementations of health-related policies
- › plan, implement, and evaluate health promotion/disease prevention programs for diverse populations

To view the full course list, visit:
worldcampus.psu.edu/bbh-courses

“I am a full-time medical assistant and mother of two young children. There is no way I would be able to complete a four-year degree program in person with my busy schedule—especially at Penn State. This online program is great. I would recommend it to anyone with a busy life.”

—Heather H.
BBH student

Career Opportunities for Graduates

Due to the growing need for professionals who have been trained to identify and solve problems in health care, the bachelor's degree in biobehavioral health can help prepare you for positions in a wide range of health-related settings.

Public Health

By applying your studies to focus on disease or injury prevention in government research programs, you can help identify health concerns facing a population and how an epidemic can be averted.

Community Health Promotion

With the degree in biobehavioral health, you would be well prepared to work as a health promotion professional. You could manage community-wide education initiatives on health topics ranging from nutrition and fitness to injury and disease prevention.

Employee/ Corporate Health

With an ever-increasing focus on health promotion and intervention programs, the knowledge you gain in this biobehavioral health program could help companies keep their employees healthy. Or, you could

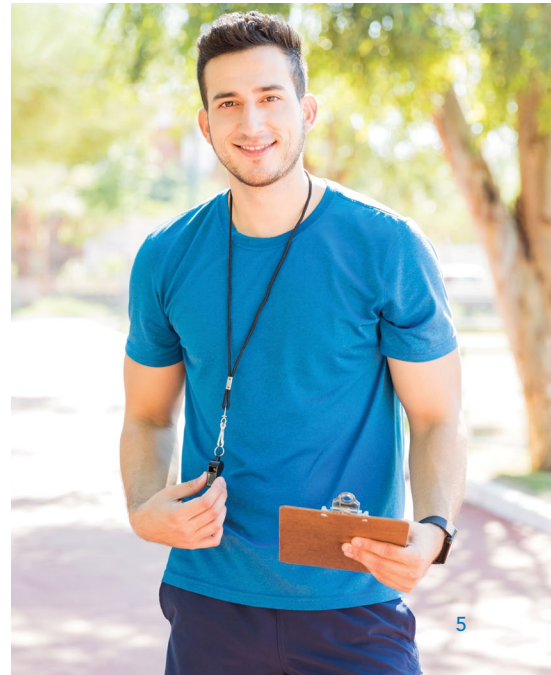
choose to focus your career on being an advocate for patients in a health system or health plan.

Sales and Marketing

As a professional with a strong background in the science of health, you could find success as a biomedical product representative or as a sales representative for technical and scientific products.

Clinical

The course work in this degree program can give you the skills and knowledge to work in a clinical setting as a research assistant, laboratory manager, or medical records and health information technician.



Frequently Asked Questions

Why is Penn State the best choice for me?

Collaboration

The BBH program is a collaboration between Penn State World Campus and Penn State's Department of Biobehavioral Health in the College of Health and Human Development. The partnership connects you with outstanding faculty who can help you integrate knowledge about the science of human health and wellness from many perspectives.

Flexibility and convenience

Penn State knows that adults need flexible and convenient learning options in order to continue meeting their professional and personal commitments. You can take courses when and where you please, earning your degree at your own pace.

Reputation

Putting a Penn State degree on your résumé is a great way to broaden your career options and prove to employers that you are a well-educated professional.

What types of student support are available?

As a Penn State World Campus student, you will be supported by a team of knowledgeable and caring staff who understand the unique challenges of balancing work and

personal responsibilities while learning online. You can access the traditional student support services, such as career services, technical support, the University Libraries system, clubs and organizations, a dedicated student affairs team, and tutoring for some courses.

Can I obtain financial aid?

Penn State realizes that one of the greatest challenges encountered when returning to school is the cost. Our advisers have been trained to help you make the most of the financial aid options and opportunities available to you. Visit worldcampus.psu.edu/tuition-and-financial-aid for details.

Is this the real Penn State?

Yes. Since Penn State World Campus was launched in 1998, it has grown into one of the most highly regarded online campuses—extending Penn State's reputation as a leader in higher education to those who aren't able to attend classes on campus or to those who can't commit to traditional, full-time enrollment. When you earn a degree through Penn State World Campus, you're earning an official *Penn State* degree. There won't be any designation on your diploma that your courses were completed at a distance.

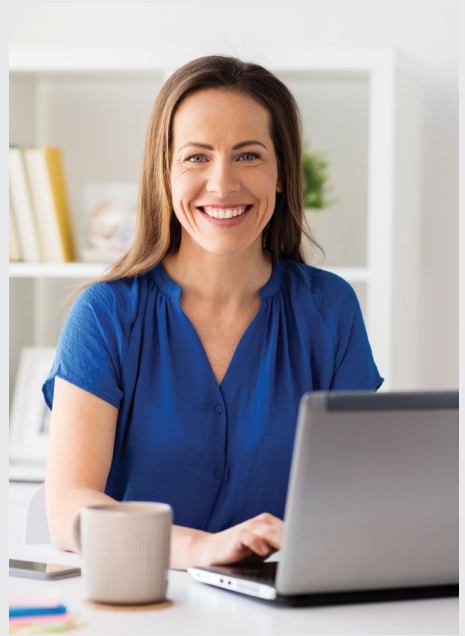
Begin Your Application Today

How to Begin

1. Visit: worldcampus.psu.edu/bbh
2. Click the “Apply Now” button to access your application.

Application Materials

- › complete online application form and fee
- › official high school transcripts or GED transcript
- › official military transcripts (if applicable)
- › official college or university transcripts (if you attended another institution)
- › TOEFL or IELTS score (if applicable)



Please visit our website for a more detailed description of the requirements and procedure: worldcampus.psu.edu/admissions

Did You Know?

- › Penn State World Campus is consistently ranked in the top 10 by *U.S. News & World Report* for having the best online bachelor’s degrees.
- › Our online courses involve frequent interactions between students and with instructors.
- › Penn State degrees earned online are identical to those earned on campus.



Contact Us

Admissions Questions

pennstateonline@psu.edu

814-863-5386

worldcampus.psu.edu/admissions



PennState
World Campus

The Pennsylvania State University
128 Outreach Building
University Park, PA 16802



[@psuworldcampus](https://www.facebook.com/psuworldcampus)



[@PSUWorldCampus](https://twitter.com/PSUWorldCampus)



[Penn State World Campus](https://www.linkedin.com/company/penn-state-world-campus)



[@pennstateworldcampus](https://www.instagram.com/pennstateworldcampus)

This publication is available in alternative media on request.

Penn State is an equal opportunity, affirmative action employer, and is committed to providing employment opportunities to all qualified applicants without regard to race, color, religion, age, sex, sexual orientation, gender identity, national origin, disability or protected veteran status. Produced by Outreach and Online Education Marketing U.Ed. OUT 19-WC-0448/ajw/sss Copyright © 2019 The Pennsylvania State University