



Master's Degree and Certificate in Geodesign



PennState
World Campus

A world of possibilities.
Online.



Study from Anywhere

All courses in geodesign are offered entirely online through Penn State World Campus, allowing you to balance your course work with personal and professional commitments. Your learning experience will be supported and enhanced by frequent interaction with faculty and other students; access to digital technologies, software, and instructional resources; and valuable academic advising and support services.

The online course format provides you with flexibility to complete your studies where and when it is most convenient for you. Our geodesign (GEODZ) courses operate on 8-week terms (with the exception of studio courses), and our geography (GEOG) courses operate on 10-week terms. We offer two sessions in the fall and spring and one summer session, making it possible for you to complete the online graduate certificate in one year and the master of professional studies (MPS) in approximately two-and-a-half years.

Ignite Your Career with Geodesign

Creative solutions for the environmental and social issues of our day demand a new type of professional: one prepared to work collaboratively across disciplines to devise innovative land-use planning and design solutions.

Geodesign is a powerful method that uses stakeholder input and innovative technology to dynamically illustrate impacts of alternative design scenarios. It's the perfect process for envisioning sustainable and resilient answers to today's problems. This collaborative design process, coupled with geospatial data negotiation, improves transparency and reduces conflict. Geodesign is making a difference worldwide for an array of land-based challenges.

Graduate Program Opportunities

The graduate programs in geodesign offered online through Penn State World Campus are for professionals who realize the limitations of current design and planning processes. They teach the skills needed to effectively address complex environmental design problems for situations ranging from resilient urban design to conservation planning.

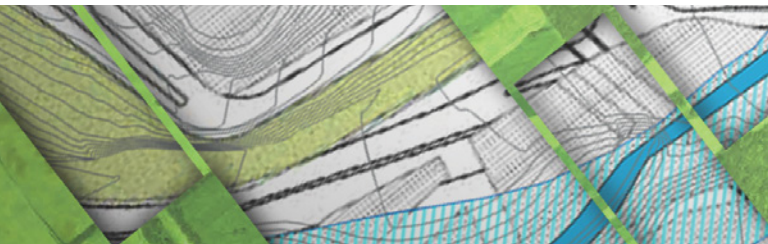
These programs, developed by Penn State's nationally renowned Department of Landscape Architecture in collaboration with the Department of Geography, receive guidance from an international advisory board of leaders in geodesign research and practice. You can advance your career while learning from leading experts.

Program choices include:

- › Master of Professional Studies (MPS) in Geodesign (35 credits)
- › Graduate Certificate in Geodesign (14 credits)

MPS capstone project examples:

- › Koala habitat and corridors (Australia)
- › Historic avenue revitalization (Mexico)
- › BMPs for watershed (Wisconsin)
- › Multi-use creek walk for resort town (Colorado)



Courses

The following courses are required for both the Graduate Certificate and the MPS in Geodesign:

GEODZ 511—History, Theory, Principles (3 credits)

GEODZ 822—Models I: Evaluation and Decision (3 credits)

GEODZ 824—Models II: Process and Impact (3 credits)

-or-

GEODZ 826—Models III: Representation and Change (3 credits)

Students who pursue the MPS will take an additional 18 credits in geodesign. Our studio courses provide problem-based workshops where students apply the geodesign process to complex landscape change and planning topics. The individual studies capstone project integrates theory and practice to address a student-selected, real-world problem through the geodesign process.

GEODZ 842—Studio I*: Rural/Regional Challenges (6 credits)

GEODZ 852—Studio II*: Urban/District-scale Challenges (6 credits)

**Studios operate on 14-week terms.*

GEODZ 596A—Individual Studies: Geodesign Capstone Project Proposal and Peer Review (3 credits)

GEODZ 596B—Individual Studies: Geodesign Capstone Project Dissemination (3 credits)

Depending on the program you choose, you are required to take 5 to 8 credits in geography courses at the 400 level or higher. Based on your experience in geospatial information systems, you and your academic adviser will determine which GEOG electives best meet your needs and interests. The following GEOG courses are recommended for those individuals without GIS experience:

GEOG 482—Making Maps that Matter with GIS (3 credits)

GEOG 483—Problem-Solving with GIS (3 credits)



Who Should Apply?

If you are a current or aspiring professional, employed in a government agency, business, or nonprofit organization and working in a field such as architecture, environmental science, geoscience, landscape architecture, geography, urban and regional planning, or engineering, you may find this program beneficial in helping to advance your leadership, design, and collaboration skills.

Begin Your Application Today

To pursue a graduate education in geodesign, you will first need to complete an online Graduate School Application Form, found by clicking on the “Apply Now” link from the program overview page at: worldcampus.psu.edu/geodesign

To enroll in one of our graduate programs, you must hold a baccalaureate degree from a regionally accredited institution with credits substantially equivalent to those required by Penn State.

The following materials are also required as part of the application process:

Graduate Certificate in Geodesign

- › a completed application and application fee
- › official transcripts from each institution attended
- › TOEFL or IELTS score, if applicable

Master of Professional Studies in Geodesign

In addition to the application materials required for the graduate certificate program, you are also required to submit:

- › names and email addresses of three references
- › résumé
- › statement of purpose (three-page maximum)

When all materials have been received, we will notify you about your status and provide guidance about the next steps to becoming a Penn State student.

For application deadlines and more information about the programs, visit: worldcampus.psu.edu/geodesign

Contact Us

Admissions Questions

pennstateonline@psu.edu

814 863 5386

worldcampus.psu.edu/admissions



PennState
World Campus

The Pennsylvania State University
128 Outreach Building
University Park, PA 16802



@psuworldcampus



@PSUWorldCampus



Penn State World Campus



@pennstateworldcampus

This publication is available in alternative media on request.

Penn State is an equal opportunity, affirmative action employer, and is committed to providing employment opportunities to all qualified applicants without regard to race, color, religion, age, sex, sexual orientation, gender identity, national origin, disability or protected veteran status. Produced by Outreach and Online Education Marketing U.Ed. OUT 19 WC 0539/lrf/smb
Copyright © 2019 The Pennsylvania State University