



Undergraduate Programs in Psychology



PennState
World Campus

A world of possibilities.
Online.

Table of Contents

Why a Degree in Psychology?	3	Psychology Minor	6
Bachelor of Arts in Psychology	4	The Penn State Difference	6
Bachelor of Science in Psychology ...	5	Begin Your Application Today	7



“What makes our program special is the quality of our faculty; they are career educators who hold or are working toward doctoral degrees, teaching in the context of a research-oriented department in which new psychological knowledge is created all the time. That gives us greater depth than many online programs, and is reflected in the variety of courses and degree options we offer, and how frequently new courses are added to the program. Students can specialize in a number of ways to prepare themselves for further training in psychology and related fields, or for a variety of career possibilities.”

—Rich Carlson, Ph.D.
Associate Head, Department of Psychology
Professor of Psychology



PennState
World Campus

A leader in online learning since 1998

To learn more about programs
in psychology, visit:
worldcampus.psu.edu/psych 1

Why a Degree in Psychology?

A degree in psychology from Penn State World Campus offers you a foundation in the principles of human behavior, skills in understanding and communicating data, and experience with problem-solving and critical thinking. The core courses provide an overview of the field of psychology, a background in research methods, and the opportunity for career exploration in psychology and related fields.

The knowledge you acquire in our online psychology programs can provide a strong basis for many career paths. Although some students go on to pursue their master's or doctoral degree in psychology, many graduates with the bachelor's degree enter the

workforce and put their knowledge and skills to work in a wide range of professions. And according to the U.S. Bureau of Labor Statistics, employment in fields requiring a degree in psychology will grow by 25 percent in the next 10 years.

With a choice of options in the bachelor's programs, you can supplement your course work in psychology with courses you've chosen to customize your degree, helping you to further expand your knowledge in a specific area to suit your education goals and career plans.

To learn more about undergraduate programs in psychology, visit: worldcampus.psu.edu/psych-1

“The World Campus faculty that I have come in contact with have been very professional and organized. They are very supportive, friendly, and want to see me succeed, and that’s the most important part for me.”

—Holly H., Graduate
Bachelor of Science in Psychology



Bachelor of Arts in Psychology

This 123-credit online program allows you to choose courses in the arts, humanities, and social sciences, as well as a foreign language, to complement your degree. It provides maximum flexibility for completing a traditional liberal arts education or preparing for graduate study. This option is an excellent choice if you want to pursue or advance a career in health services, such as counseling, social work, or caregiving.

Prescribed courses for the major include:

- › Introductory Psychology
- › Psychology as a Science and Profession
- › Basic Research Methods in Psychology
- › Senior Seminar in Psychology



As a Penn State World Campus student in the psychology curriculum, you can join the Psi Chi Chapter Psychology Club, the world's first online psychology club, with more than 100 members located around the world.

For more information, visit:
worldcampus.psu.edu/psych-1



“Being a Penn Stater means you have a sense and feeling of belonging, and that is an amazing experience that I never thought would be possible. It’s great to have a sense of community and belong to something that is bigger than itself.”

—Fernando R., Graduate,
Bachelor of Arts in Psychology

Bachelor of Science in Psychology— Life Sciences Option

This 123-credit online program gives you the opportunity to complement your education in psychology with courses focused on the life sciences—those most closely related to psychology, including anthropology, biology, and biobehavioral health. It is an excellent choice if you plan to attend graduate school in psychology or pursue a career in health care or behavioral health.

Courses in the Life Sciences option include:

- › Genetics and Evolution of the Human Species
- › Humans as Primates
- › Drugs, Behavior, and Health
- › Introduction to the Biology of Aging

Bachelor of Science in Psychology— Business Option

This degree allows you to choose courses in business, leadership, ethics, and diversity, which together with the analytic and communication skills you can acquire in psychology courses, provide you with an excellent background for a range of careers in business. It also lays the groundwork for graduate study in industrial-organizational psychology, organizational behavior, or consumer behavior.

Courses in the Business option include:

- › Policy Making and Evaluation
- › Social, Legal, and Ethical Environment of Business
- › Work and Occupations

For more information, visit:
worldcampus.psu.edu/psych-1



Psychology Minor

The 18-credit online Psychology Minor can help you understand, explain, and predict human behavior. It focuses on several fields of study, including biological, clinical, cognitive, developmental, industrial/organizational, and social psychology, and their application to the workplace. This minor is an excellent complement to many fields of study, providing you with added insight into why people behave as they do.

The Penn State Difference

Award-winning Education—Online

For more than five years, Penn State World Campus has earned top-10 honors in the *U.S. News & World Report* Best Online Programs rankings for our undergraduate programs. Our graduate business, education, engineering, and computer information sciences programs have also been honored in these prestigious rankings.

Get Involved

Engage with your peers through student organizations, including student alumni groups and program-based clubs, or consider joining the student advisory board, a group whose

members provide advocacy on behalf of students. You can also aspire to membership in an honor society or to make the dean's list.

Student Services

Take advantage of our student services, which include access to Academic Advising, Career Services, Library Services, Mental Health Services, and Disability Accommodations. Our support staff can help you foster good habits for a healthy work–life balance during your student experience.

Technology and Tutoring

As a Penn State World Campus student, you'll have access to technical support to help you with computer-related concerns via email, phone, and even chat—during expanded hours that accommodate a distance learning population. We also offer tutoring online and in-person and provide guidance with learning technology.



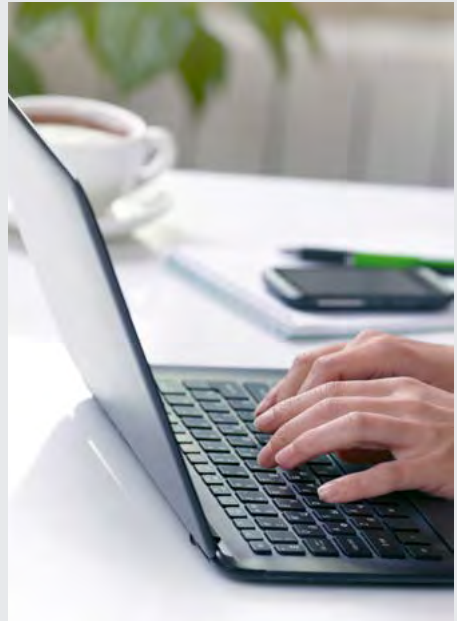
Begin Your Application Today

How to Begin

1. Visit worldcampus.psu.edu/psych-1.
2. Choose your program.
3. Click the "Apply Now" button to access your application.

Application Materials

- › online application and fee
- › official high school transcripts or GED transcript along with records from high school
- › official college or university transcripts, if you attended another institution, and/or official military transcripts (if applicable)
- › TOEFL or IELTS score (if applicable)



Please visit our website for a more detailed description of the requirements and application procedure: worldcampus.psu.edu/admissions

Did You Know?

- › Penn State World Campus is consistently ranked in the top 10 by *U.S. News & World Report* for having the best online bachelor's programs.
- › Our online courses are taught by the same renowned faculty who teach our resident students, and the Penn State World Campus degrees and certificates you earn online are identical to those earned on campus.



Contact Us

Admissions Questions

pennstateonline@psu.edu

814 863 5386

worldcampus.psu.edu/admissions



PennState
World Campus

The Pennsylvania State University
128 Outreach Building
University Park, PA 16802



[@psuworldcampus](https://www.facebook.com/psuworldcampus)



[@PSUWorldCampus](https://twitter.com/PSUWorldCampus)



[Penn State World Campus](https://www.linkedin.com/company/penn-state-world-campus)



[@pennstateworldcampus](https://www.instagram.com/pennstateworldcampus)

This publication is available in alternative media on request.

Penn State is an equal opportunity, affirmative action employer, and is committed to providing employment opportunities to all qualified applicants without regard to race, color, religion, age, sex, sexual orientation, gender identity, national origin, disability or protected veteran status. Produced by Outreach and Online Education Marketing U.Ed. OUT 19 WC 0471/bjh/bjm Copyright © 2019 The Pennsylvania State University